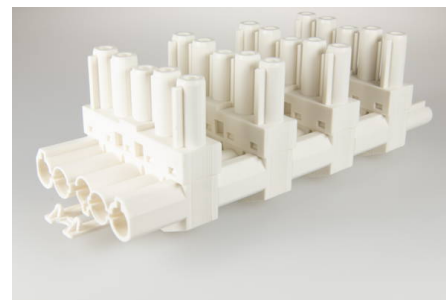




Building Installation Connector System AC 166®

G
Distributors

AC 166 GVT 6/ 5 WS



Order Info

reference number (ref. no.)	18099
PU	25
EAN	4028012113699

Type

Type	T-shaped 1 input / 5 outputs
number of poles	5 pole
coding	1 (mains)
colour	white
protection against incorrect plugging	yes
PE-function	yes
latch	yes

Electrical Data

rated voltage	250 V
rated current	20 A
rated impulse voltage	4.0 kV

Ambient Conditions

T _{max} ambient air (at rated current)	70 °C
T _{max} component (operation)	110 °C
T _{min} component (operation)	-20 °C
IP Code acc. to EN 60529	IP20
IP Code when plugged	IP40

Materials

insulator material	PA
contact material	brass
flammability rating acc. to UL 94	V-2

Approvals

acc. to EN 61535	yes
------------------	-----