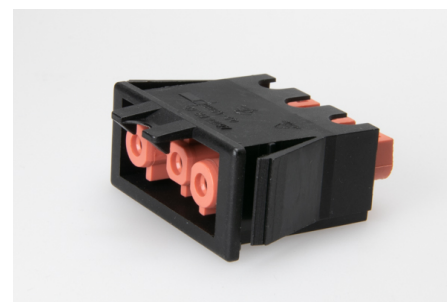




## Building Installation Connector System AC 166®

G  
Panel Mounting

### AC 166 GEBUBV/ 3 HR/SW



#### Order Info

reference number (ref. no.)	17824
PU	200
EAN	4028012111442

#### Type

Type	panel mount socket
connection type	screw
number of poles	3 pole
coding	3 (mains)
colour	light red black
protection against incorrect plugging	yes
PE-function	yes
latch	yes

#### Electrical Data

rated voltage	250 V
rated current	20 A
rated impulse voltage	4.0 kV

#### Connection Data

cross-section rating	2.5 mm <sup>2</sup>
cross-section rating (UL)	14 AWG
clamping range	0.5 - 4.0 mm <sup>2</sup>
type of conductor	fine stranded, stranded, solid
stripping length	7.0 mm
fixing	catch wing
clamping units per pole	1
contact screw assembly	0.5 x 3.0 / ⌀ 0.3 Nm
pole marking	L1 ⊕ N
wall thickness	0.5 - 1.5 mm

#### Ambient Conditions

T <sub>max</sub> ambient air (at rated current)	70 °C
---	-------

<b>T<sub>max</sub> component (operation)</b>	110 °C
<b>T<sub>min</sub> component (operation)</b>	-20 °C
<b>IP Code acc. to EN 60529</b>	IP20
<b>IP Code when plugged</b>	IP40

## Materials

<b>insulator material</b>	PA
<b>contact material</b>	brass
<b>flammability rating acc. to UL 94</b>	V-2

## Approvals

<b>acc. to EN 61535</b>	yes
<b>acc. to UL</b>	yes
<b>acc. to CSA</b>	yes