

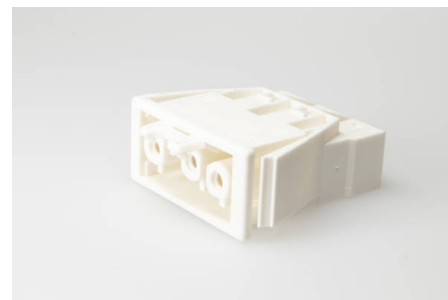


Building Installation Connector System AC 166®

G

Panel Mounting

AC 166 GEBU/ 3 WS VSE



Order Info

reference number (ref. no.)	17807
PU	200
EAN	4028012111565

Type

Type	panel mount socket with latch
connection type	push-in
number of poles	3 pole
coding	1 (mains)
colour	white
protection against incorrect plugging	yes
PE-function	yes
latch	yes

Electrical Data

rated voltage	250 V
rated current	20 A
rated impulse voltage	4.0 kV

Connection Data

cross-section rating	2.5 mm ²
cross-section rating (UL)	14 AWG
clamping range	0.5 - 2.5 mm ²
type of conductor	solid
stripping length	8.0 - 9.0 mm
fixing	catch wing
clamping units per pole	2
wall thickness	0.5 - 1.2 mm

Ambient Conditions

T _{max} ambient air (at rated current)	70 °C
T _{max} component (operation)	110 °C
T _{min} component (operation)	-20 °C

IP Code acc. to EN 60529	IP20
---------------------------------	------

IP Code when plugged	IP40
-----------------------------	------

Materials

insulator material	PA
---------------------------	----

contact material	spring steel, brass
-------------------------	---------------------

flammability rating acc. to UL 94	V-2
--	-----

Approvals

acc. to EN 61535	yes
-------------------------	-----

acc. to UL	yes
-------------------	-----

acc. to CSA	yes
--------------------	-----