

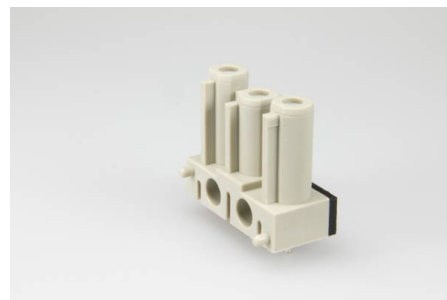


Building Installation Connector System AC 166®

G

Terminal Blocks with Solder Tags

AC 166 GBULV/ 3 KG



Order Info

reference number (ref. no.)	169303
PU	500
EAN	4028012107605

Type

Type	socket vertical
connection type	solder
number of poles	3 pole
coding	2 (mains)
colour	pebble grey
protection against incorrect plugging	yes
PE-function	yes

Electrical Data

rated voltage	250 V
rated current	20 A
rated impulse voltage	4.0 kV

Connection Data

mounting hole diameter	1.4 mm
solder pin length	3.3 mm

Ambient Conditions

T _{max} ambient air (at rated current)	70 °C
T _{max} component (operation)	110 °C
T _{min} component (operation)	-20 °C
IP Code acc. to EN 60529	IP20
IP Code when plugged	IP40

Materials

insulator material	PA
contact material	brass
flammability rating acc. to UL 94	V-2

Approvals

acc. to EN 61535	yes
acc. to UL	yes

Accessories

AC 166 VSL SW	169564
AC 166 VSL WS	169554