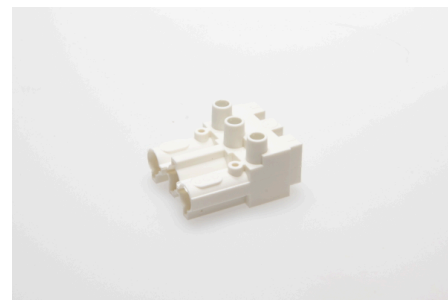




Connectors System AC 166® Classic Plug and Socket Connectors Tall Version

AC 166-A BU/ 3 WS



Order Info

| | |
|-----------------------------|---------------|
| reference number (ref. no.) | 163353 |
| PU | 200 |
| EAN | 4028012107070 |

Type

| | |
|---------------------------------------|-----------|
| Type | socket |
| connection type | screw |
| number of poles | 3 pole |
| coding | 1 (mains) |
| colour | white |
| protection against incorrect plugging | yes |
| PE-function | yes |

Electrical Data

| | |
|-----------------------|--------|
| rated voltage | 250 V |
| rated current | 16 A |
| rated impulse voltage | 2.5 kV |

Connection Data

| | |
|---------------------------|--------------------------------|
| cross-section rating | 2.5 mm ² |
| cross-section rating (UL) | 14 AWG |
| clamping range | 0.5 - 4.0 mm ² |
| type of conductor | fine stranded, stranded, solid |
| stripping length | 7.0 mm |
| fixing | Screw |
| clamping units per pole | 1 |
| mounting hole diameter | 3.5 mm |

Ambient Conditions

| | |
|---|--------|
| T _{max} ambient air (at rated current) | 70 °C |
| T _{max} component (operation) | 110 °C |
| T _{min} component (operation) | -20 °C |
| IP Code acc. to EN 60529 | IP20 |
| IP Code when plugged | IP40 |

Materials

| | |
|--|-------|
| insulator material | PA |
| contact material | brass |
| flammability rating acc. to UL 94 | V-2 |

Approvals

| | |
|-------------------------|-----|
| acc. to EN 61984 | yes |
| acc. to UL | yes |
| acc. to CSA | yes |

Accessories

| | |
|-----------------------------|--------|
| AC 166-A ZEL/ 3 WS | 166653 |
| AC 166-A ZEL/ 3 O WS | 17619 |